



## Parking space in Mahon

Ref.: 24248

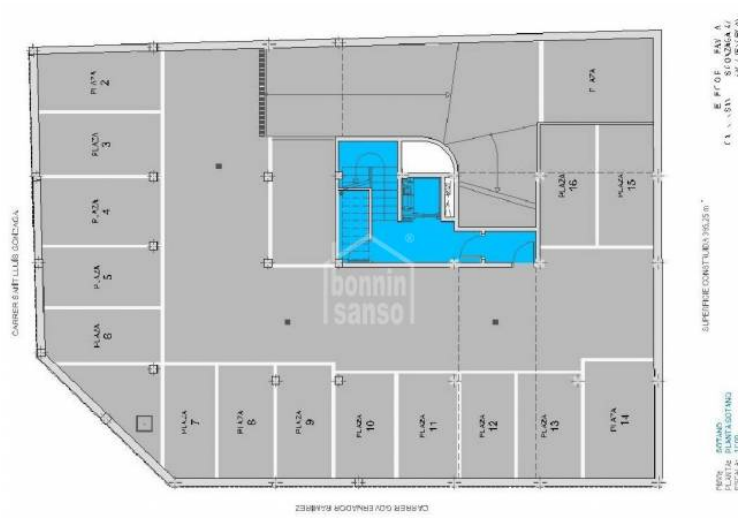
Parking space in the basement of a residential building, located in the vicinity of Borja Moll.



Price: **6.800 €**

	Cons.	Emiss.
A		
B		
C		
D		
E		
F		
G		
Exento	X	X

The information shown is provided by third parties for information only and are assumed correct.  
 The data are subject to errors, price changes and withdrawal without notice.



The information shown is provided by third parties for information only and are assumed correct.  
The data are subject to errors, price changes and withdrawal without notice.