



10 garages with 2 patios in the town of Es Migjorn.

Ref.: 24935

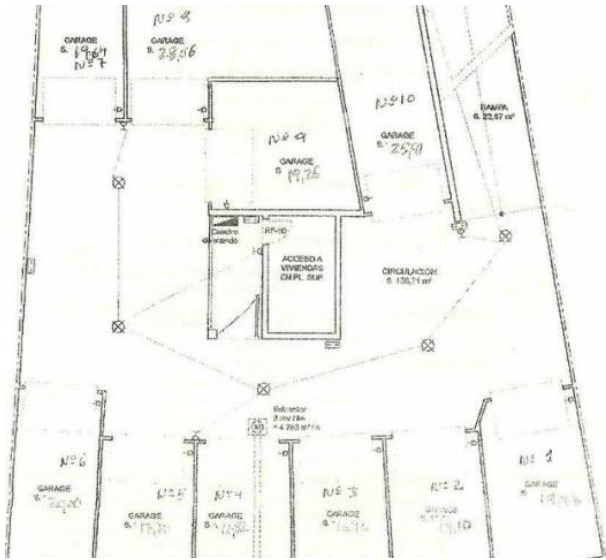
A total of 10 lock up garages (totalling 347m²) on the basement floor in a block of apartments built in 1990. Each garage has an individual door. There are also 2 patios of 246m², all in the centre of Es Migjorn.



Price: **On request**

	Cons.	Emiss.
A		
B		
C		
D		
E		
F		
G		
Exento	X	X

The information shown is provided by third parties for information only and are assumed correct. The data are subject to errors, price changes and withdrawal without notice.



The information shown is provided by third parties for information only and are assumed correct.
The data are subject to errors, price changes and withdrawal without notice.



The information shown is provided by third parties for information only and are assumed correct.
The data are subject to errors, price changes and withdrawal without notice.



The information shown is provided by third parties for information only and are assumed correct.
The data are subject to errors, price changes and withdrawal without notice.