



## Garage/parking in Mahón (City)

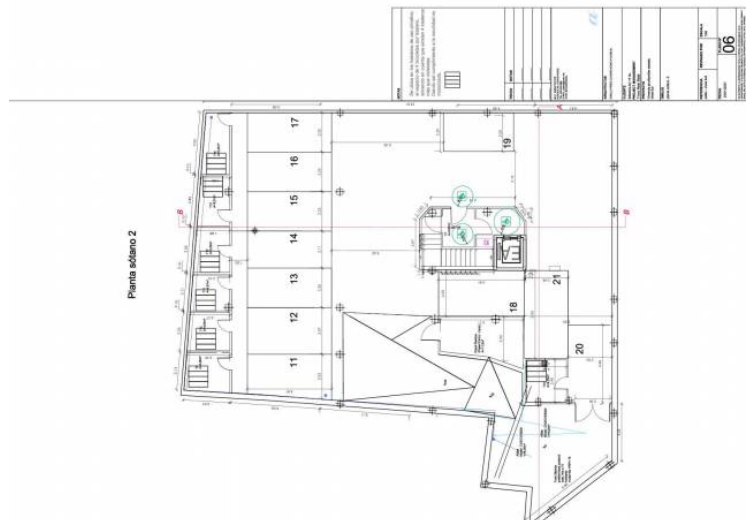
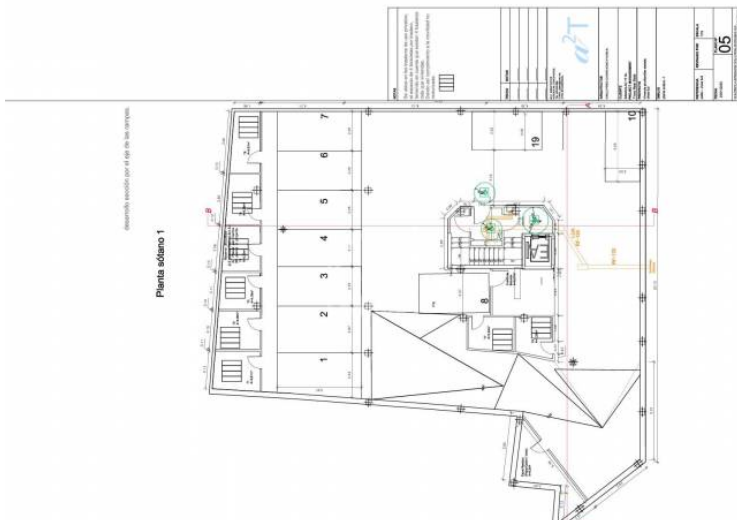
Ref.: 29250

Exclusive residential development "Sa Naclac" only a few minutes away from the centre of Mahón. It is a building with 13 homes, designed to form a small community of neighbours. The building is made to fulfil the needs of each of its future inhabitants. Materials, services and details, have been chosen and designed with great care, in order to create harmonious and pleasant spaces to enjoy day to day. Parking space within a new housing development in the Calle Vives Llull in Mahon, residential area close to schools and all amenities. Located in basement 2 with lift access. Various spaces available. Subject to 21% VAT, plus legal costs.

Price: **20.000 €**

	Cons.	Emiss.
A		
B		
C		
D		
E		
F		
G		
Exento	X	X

The information shown is provided by third parties for information only and are assumed correct.  
The data are subject to errors, price changes and withdrawal without notice.



The information shown is provided by third parties for information only and are assumed correct.  
The data are subject to errors, price changes and withdrawal without notice.