



Exclusive new-build development in Ciutadella de Menorca

Ref.: 36999

New development in Ciutadella de Menorca, located in a quiet residential area just a few minutes from the town centre. The development offers two- and three-bedroom homes, all with two bathrooms, covered terraces, utility areas and storage rooms. It also features an exclusive two-bedroom, two-bathroom penthouse with two terraces of approximately 30 m². The building will have a lift. Ideal as a permanent residence or as an investment. On the second floor there is this two-bedroom, two-bathroom apartment, featuring a spacious open-plan living-dining area with open kitchen and a covered terrace with utility and storage area. Contact us for more information!



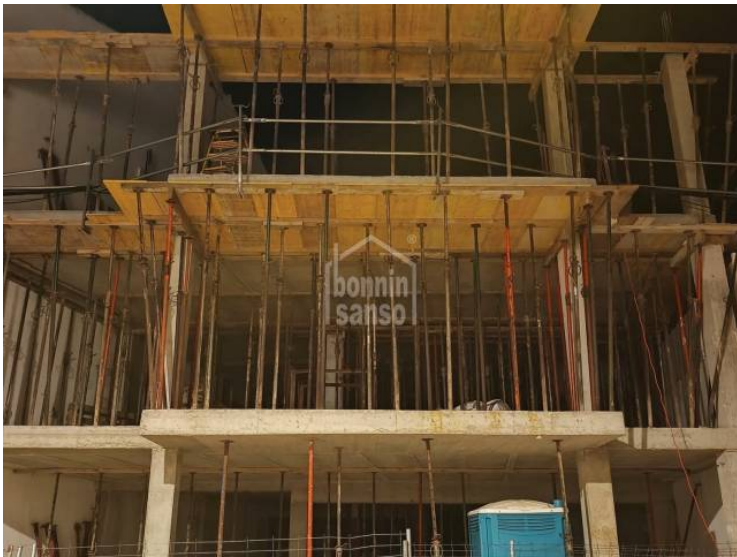
Price: 325.000 €

	Cons.	Emis.
A		
B		
C		
D		
E		
F		
G		

The information provided has been supplied by third parties for informational purposes only and is deemed to be correct. However, it may be subject to errors, price changes, and withdrawal from the market without prior notice.

*The stated prices do not include applicable VAT or Property Transfer Tax (ITP), nor notary and land registry fees.

**In the case of new developments, the applicable taxes will be 10% VAT + 1.5% Stamp Duty (AID), in addition to notary and land



The information provided has been supplied by third parties for informational purposes only and is deemed to be correct. However, it may be subject to errors, price changes, and withdrawal from the market without prior notice.

*The stated prices do not include applicable VAT or Property Transfer Tax (ITP), nor notary and land registry fees.

**In the case of new developments, the applicable taxes will be 10% VAT + 1.5% Stamp Duty (AJD), in addition to notary and land



The information provided has been supplied by third parties for informational purposes only and is deemed to be correct. However, it may be subject to errors, price changes, and withdrawal from the market without prior notice.

*The stated prices do not include applicable VAT or Property Transfer Tax (ITP), nor notary and land registry fees.

**In the case of new developments, the applicable taxes will be 10% VAT + 1.5% Stamp Duty (AID), in addition to notary and land