



IDO Fornells... living where the sea sets the rhythm, in Menorca.

Ref.: 93195

On the north coast of Menorca, where the landscape retains its most authentic character, IDO Fornells is a development conceived for those who understand that true luxury is not always about ostentation, but about quality of life. Fornells is sea, tradition, gastronomy and tranquillity. It means waking up to the northern light, feeling the sea breeze, enjoying unhurried walks and discovering one of the best-preserved natural settings in the Mediterranean. And now, it also offers the opportunity to acquire a brand-new home in a truly unique enclave. The development comprises a collection of exclusive homes designed to integrate harmoniously with their surroundings, combining contemporary architecture, functionality and comfort. Ground-floor apartments with private terraces create a seamless connection with the outdoors. Thoughtfully designed for those who value comfort, privacy and easy living, they also feature direct internal



Price: **450.000 €**

	Cons.	Ems.
A		
B		
C		
D		
E		
F		
G		
Exento	X	X

The information provided has been supplied by third parties for informational purposes only and is deemed to be correct. However, it may be subject to errors, price changes, and withdrawal from the market without prior notice.

*The stated prices do not include applicable VAT or Property Transfer Tax (ITP), nor notary and land registry fees.

**In the case of new developments, the applicable taxes will be 10% VAT + 1.5% Stamp Duty (AID), in addition to notary and land



LA AGENCIA INMOBILIARIA DE REFERENCIA EN MENORCA DESDE 1988

ESTATE AGENTS
AGENZIA IMMOBILIARE

AGENCE IMMOBILIÈRE
IMMOBILIENAGENTUR



The information provided has been supplied by third parties for informational purposes only and is deemed to be correct. However, it may be subject to errors, price changes, and withdrawal from the market without prior notice.

*The stated prices do not include applicable VAT or Property Transfer Tax (ITP), nor notary and land registry fees.

**In the case of new developments, the applicable taxes will be 10% VAT + 1.5% Stamp Duty (AID), in addition to notary and land



The information provided has been supplied by third parties for informational purposes only and is deemed to be correct. However, it may be subject to errors, price changes, and withdrawal from the market without prior notice.

*The stated prices do not include applicable VAT or Property Transfer Tax (ITP), nor notary and land registry fees.

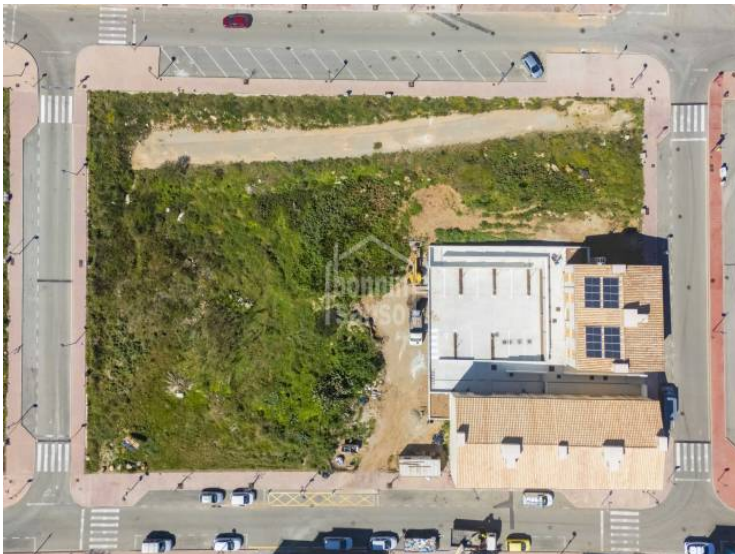
**In the case of new developments, the applicable taxes will be 10% VAT + 1.5% Stamp Duty (AID), in addition to notary and land



The information provided has been supplied by third parties for informational purposes only and is deemed to be correct. However, it may be subject to errors, price changes, and withdrawal from the market without prior notice.

*The stated prices do not include applicable VAT or Property Transfer Tax (ITP), nor notary and land registry fees.

**In the case of new developments, the applicable taxes will be 10% VAT + 1.5% Stamp Duty (AJD), in addition to notary and land



The information provided has been supplied by third parties for informational purposes only and is deemed to be correct. However, it may be subject to errors, price changes, and withdrawal from the market without prior notice.

*The stated prices do not include applicable VAT or Property Transfer Tax (ITP), nor notary and land registry fees.

**In the case of new developments, the applicable taxes will be 10% VAT + 1.5% Stamp Duty (AID), in addition to notary and land



The information provided has been supplied by third parties for informational purposes only and is deemed to be correct. However, it may be subject to errors, price changes, and withdrawal from the market without prior notice.

*The stated prices do not include applicable VAT or Property Transfer Tax (ITP), nor notary and land registry fees.

**In the case of new developments, the applicable taxes will be 10% VAT + 1.5% Stamp Duty (AID), in addition to notary and land



The information provided has been supplied by third parties for informational purposes only and is deemed to be correct. However, it may be subject to errors, price changes, and withdrawal from the market without prior notice.

*The stated prices do not include applicable VAT or Property Transfer Tax (ITP), nor notary and land registry fees.

**In the case of new developments, the applicable taxes will be 10% VAT + 1.5% Stamp Duty (AJD), in addition to notary and land