



Edificabili in Coves Noves

Rif.: 29591

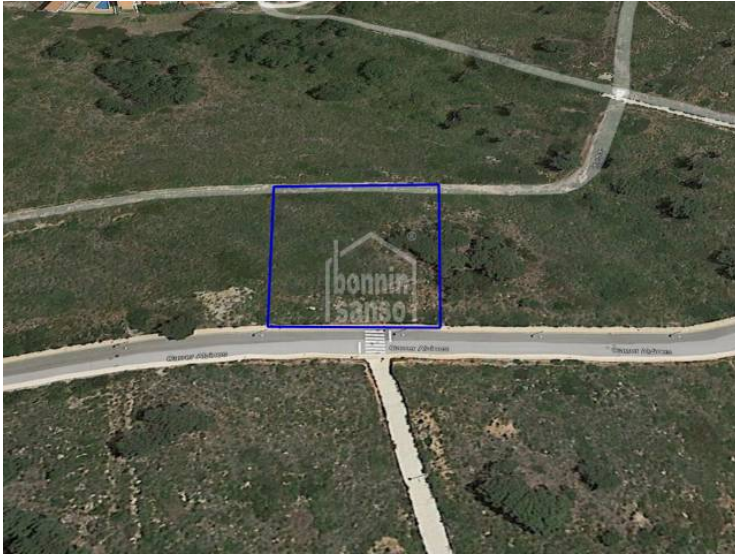
Looking for a project ?. Plot of 2000 square meters with authentic mediterranean views, located in the Coves Noves urbanization. Sewerage, electricity and water at the foot of the plot. Possibility of construction: Urban parameters: Preferential use of isolated single-family housing □ Minimum front of plot 15.00m □ Maximum buildable 0.35m² / m plot □ Maximum regulatory height 7.00m (3.50m maximum from the street) □ Number of floors 2 (ground floor + floor) □ Setbacks to public roads 5m; between plot 3m; and between buildings 3m. □ Minimum segregated plot 1000m² Intensity of use 1 home for every 600m². It is important to note that this parcel already has a connection to the sewerage network, so the processing of building projects is possible. Social club with restaurant, swimming pool, paddle tennis courts. Tennis. Gym etc. Five minutes from the Addaya Marina (1.5km) and (1.8km from the Son Parc Golf Club). Ask your



Prezzo: **850.000 €**

	Cons.	Emis.
A		
B		
C		
D		
E		
F		
G		

Le informazioni visualizzate sono fornite da terzi per solo informazioni e sono assunto corretta. I dati sono soggetti ad errori, variazioni dei prezzi e il ritiro senza preavviso.



Le informazioni visualizzate sono fornite da terzi per solo informazioni e sono assunto corretta.
I dati sono soggetti ad errori, variazioni dei prezzi e il ritiro senza preavviso.